

A grid of small yellow triangles is scattered across the magenta background, with a higher density in the upper half. The triangles are arranged in a roughly rectangular pattern, with some missing or slightly offset.

RUNRUN

Pinpoint™

RunRun

A ProDOS Program Selector
for the Apple IIc and IIe

by

Brian E. Skiba



Pinpoint Publishing
Emeryville, California

Limitation on Warranties and Liability

Even though Pinpoint has tested the software described in this user guide and reviewed its contents, neither Pinpoint Publishing, Virtual Combinatics, Inc. nor its software suppliers make any warranty or representation, either express or implied, with respect to this user guide or to the software described in it, its quality, performance, merchantability, or fitness for any particular purpose. As a result, this software and user guide are sold "as is." The purchaser assumes the entire risk as to their quality and performance. In no event will Pinpoint Publishing, Virtual Combinatics, Inc., or its software suppliers be liable for direct, indirect, special, incidental, or consequential damages resulting from any defect in the software or user guide, even if they have been advised of the possibility of such damages. In particular, they shall have no liability for any programs or data stored in or used with Pinpoint products, including the costs of recovering these programs or data. Some states do not allow the exclusion or limitation of implied warranties or liability for incidental or consequential damages, so the above limitation or exclusion may not apply to you. If you think you bought a defective copy of Pinpoint software, send the disk back to us and we'll send you a new disk, free. Apple Computer, Inc. makes no warranties, either express or implied, regarding the enclosed computer software package, its merchantability or its fitness for any particular purpose. The exclusion of implied warranties is not permitted by some states. The above exclusion may not apply to you. This warranty provides you with specific legal rights. There may be other rights that you may have which vary from state to state.

Copyright Notice

This user guide and software described in it are copyrighted by Pinpoint Publishing and Virtual Combinatics, Inc. with all rights reserved. Under the copyright laws, this user guide or the programs may not be copied, in whole or part, without the written consent of Pinpoint Publishing or Virtual Combinatics, Inc., except in the normal use of the software to make backup copies. This exception does not allow copies to be made for others, whether or not sold. Under the law, copying includes translating into another language or format. You may use the software on any computer owned by you but extra copies cannot be made for this purpose. For some products, a multi-use license may be purchased to allow the software to be used on more than one computer owned by the purchaser, including a shared disk system. Contact Pinpoint Publishing for more information.

ProDOS and BASIC.SYSTEM are copyrighted programs of Apple Computer, Inc., licensed to Pinpoint Publishing and Virtual Combinatics, Inc. to distribute for use only in combination with RunRun. ProDOS and BASIC.SYSTEM shall not be copied onto another disk (except for archival purposes) or into memory unless as part of the execution of RunRun. When RunRun has completed execution, ProDOS and BASIC.SYSTEM shall not be used by any other program.

Copyright © 1986 Pinpoint Publishing. All rights reserved.

Published by and licensed exclusively to Virtual Combinatics, Inc. dba Pinpoint Publishing

5901 Christie Avenue, Suite 501 • Emeryville, CA 94608

PO Box 13323 • Oakland, CA 94661 • (415) 654-3050

Telex 245-8579 • CompuServe 76244,123 • Delphi and MCI: PINPOINT

Pinpoint Publishing and Virtual Combinatics, Inc. reserve the right to make improvements to this user guide and software described in it at any time without notice. Pinpoint Publishing and Virtual Combinatics, Inc. cannot guarantee that you will receive notice of a revision to the software described in this user guide, even if you have received the product and returned a registration card received with the product. You should periodically check with your authorized Pinpoint dealer.

First Edition

Software Author: Brian E. Skiba

User Guide Author: Elisabeth C. Swan

Technical Editor: Mate Gross

Desktop Publisher: Mary Sanichas

Trademark Acknowledgements

Pinpoint, RunRun, InfoMerge, Point-to-Point, Pinpoint Toolkit, Pinpoint Apple IIe Upgrade Kit, Pinpoint RAM Enhancement Kit, Pinpoint RAM Switcher, Micro Cookbook, Pinpoint Modem Enhancement Kit, Pinpoint Document Checker, and Pinpoint Spelling Checker are trademarks of Pinpoint Publishing and Virtual Combinatics, Inc. Apple, Apple II, Apple IIc, Apple IIe, Enhanced Apple IIe, ProDOS FILER, System Utilities, Applesoft, Apple Writer, UniDisk 3.5, Apple PASCAL, ProDOS, BASIC.SYSTEM, EDASM, and AppleWorks are trademarks of Apple Computer, Inc. Super AppleWorks Desktop Expander is a trademark of Applied Engineering. ASCII Professional Communications is a trademark of Southeastern Data Communications. Copy II Plus is a trademark of Central Point Software. MouseWrite is trademark of Roger Wagner. All other references are trademarks of their respective owners.

Table of Contents

List of Figures	Figures.....v
Preface	24 Hour Toll Free Order Desk.....vi
	How to Get Technical Support.....vi
Chapter 1	What You Need.....1.1
Introducing RunRun	Hardware Requirements.....1.1
	Software Requirement.....1.1
	What You Want for Best Performance.....1.1
	Recommended Hardware.....1.1
	Recommended Software.....1.1
Chapter 2	Making Copies.....2.1
Getting to Know RunRun	Booting RunRun.....2.1
	Checking RunRun Out.....2.2
	Moving About the Application List Menu.....2.2
	The Accessory Pull-Down Menu.....2.3
	Running Accessories within Accessories.....2.4
	The File Pull-Down Menu.....2.4
	Cataloguing Your Files.....2.5
	Moving Around.....2.5
	Another Way to Run a Program.....2.5
	Catalog within a Catalog.....2.6
	Making Your Window Grow (or Shrink).....2.6
	Dragging Your Window Around.....2.6
	Selecting the Active Device.....2.7
	Adding an Application.....2.7
	The Title Field.....2.8
	The System File Field.....2.8
	The Program Path Field.....2.8
	Things to Do with the Program Path Field.....2.9
	Exiting a BASIC Program.....2.9
	A Special Note to RAM Kit Owners.....2.9
	Running an Application.....2.9
	Modifying an Application.....2.10
	Removing an Application.....2.10
	Quitting RunRun.....2.10
Chapter 3	Installing Pinpoint onto RunRun.....3.1
Installing RunRun	Installing RunRun onto Your Storage Device.....3.1
	Reconfiguring the RAM Enhancement Kit.....3.2

A: The Bare Bones Step-by-Step Chart.....	A.1
B: ProDOS Pathnames Made Simple.....	A.2
C: Other Pinpoint Products.....	A.6
Pinpoint Desktop Accessories.....	A.6
Pinpoint Spelling Checker.....	A.6
Point-to-Point.....	A.7
ProFILER.....	A.7
Pinpoint Apple IIe Upgrade Kit.....	A.8
Pinpoint RAM Enhancement Kit.....	A.8
Pinpoint Modem Enhancement Kit.....	A.8
InfoMerge.....	A.9
Micro Cookbook.....	A.9
Optional Recipe Disks.....	A.10
Pinpoint Toolkit.....	A.10
Pinpoint Instant Business Letters.....	A.11
Pinpoint Document Checker.....	A.11

List of Figures

Figure 2.1	The RunRun Desktop.....	2.2
Figure 2.2	The Application List Menu.....	2.3
Figure 2.3	The Accessory Pull-Down Menu.....	2.3
Figure 2.4	Calculator with the Appointment Calendar.....	2.4
Figure 2.5	The File Pull-Down Menu.....	2.5
Figure 2.6	A Catalog Window.....	2.6
Figure 2.7	Catalog Window Sized and Relocated.....	2.7
Figure 2.8	The Add an Application Menu.....	2.8
Figure 2.9	The Program Path with a BASIC Program.....	2.8
Figure 2.10	The Program Path with a Default Path.....	2.9

Preface

RunRun is a ProDOS program selector for Apple II owners. Like all Pinpoint products, RunRun is designed to help you get more from your Apple™ computer. Our package includes this user guide and a ProDOS™ disk containing RunRun.

Isn't it nice to receive software on non-copy protected disks? We distribute all our software, including RunRun, on non-copy protected disks because we want our software to be convenient to use, and because we trust you. Please remember that giving a copy of our software to a friend is a violation of copyright laws. Illegal copying of our software also makes it harder for us to make a living selling the software you'll be using and depending on every time you use your computer.

We value your assessment of our software, and we want to include your ideas in our new product plans, so let's hear from you.

General Offices

(415) 654-3050

Mailing Address

Pinpoint Publishing • PO Box 13323 • Oakland, CA 94661
Attention: Product Development

If you would like to order another Pinpoint product, we have toll free sales lines. Just check the last appendix in this manual for a list of Pinpoint products and call:

24 hr. Toll Free Order Desk

United States (800) 633-2252 Ext. 582

How to Get Technical Support

Our technical support team is ready to help you solve any problems or answer any questions you might have. Just call weekdays between 9 am and 5 pm West Coast time, and be prepared to give us your software registration number. If we didn't require the registration number, our phone lines would be tied up by callers who have not come by our product legitimately. We want to keep our lines *open* to provide our customers with the best possible service. So, please complete your registration card and return it to us as soon as possible.

We can serve you more quickly if you have the following information readily available when you call:

Registration Number of RunRun (*required for technical support*)

Version # of RunRun

Version # of Pinpoint Desktop Accessories

Version #'s of RAM card software

Computer model type

Plus all other information that you think is important

Technical Support Telephone Number

(415) 654-0286 • 9 am to 5 pm West Coast time
Thanks!

Chapter 1

Introducing RunRun

RunRun is a versatile ProDOS program selector from Pinpoint. It is a front-end program that features the unique capability of being able to run Pinpoint Desktop Accessories™ *right* from the selector. It has mouse-like features, such as pull-down windows and dialog boxes, without the need for an actual mouse. RunRun also makes it possible to run a desktop accessory within another desktop accessory. An example of this would be dialing a phone number while in the middle of an calendar entry. Because of this feature, it is ideal to own RunRun *and* the Pinpoint Desktop Accessories. Without Pinpoint, you won't be able to take advantage of the desktop accessories from the RunRun desktop.

RunRun was originally designed and used as a “simulation tank” for writing and testing desktop accessories. Program selection became a desired feature, so it was added. Viewing of ProDOS catalogs was needed, so it was implemented. Naturally, sorted catalogs were desired, so sorting by file name, file type, modification date, and file size were all added. RunRun, written using the Pinpoint Toolkit,™ is a program that is evolving. It is a program that can be added to and modified to suit your particular style of operation — a truly unique product.

What You Need

Hardware Requirements

- Enhanced Apple IIe™ with 128K or
- Apple IIc™

Software Requirements

- RunRun Desktop Manager

What You Want For Best Performance

Recommended Hardware

- A second 5-1/4” disk drive
- 256K to 1MB RAM drive
- Hard disk or UniDisk 3.5™

Recommended Software

- Pinpoint Desktop Accessories, Version 1.3
- Pinpoint RAM Enhancement Kit™

RunRun is a very simple program to install and use but the following chapters will provide detailed instructions just the same. For those of you who feel confined by manuals and enjoy the challenge of using programs by trial and error, there's a bare bones step-by-step chart in Appendix A. Now on to Chapter 2.

Chapter 2

Getting to Know RunRun

Making Copies

RunRun is supplied on a write-protected disk to protect it and you. The program is not copy-protected, so you should first make a working copy that you can configure and use. Use the ProDOS FILER,[™] System Utilities,[™] or Central Point's Copy II Plus[™] to make a working copy.

Booting RunRun *Is your computer off?*

If your computer is off, just make sure your copy of RunRun is in your startup drive and then turn the power on. This is known as a *cold boot*.

Is your computer on?

If your computer is already on, you can warm boot by pressing CONTROL- \hat{C} -RESET.

Are you already in ProDOS BASIC?

If Apple's ProDOS disk operating system has already been loaded, and you're in the Applesoft[™] command mode (that's where you see the "J" prompt symbol), you can begin RunRun by inserting the RunRun working disk in drive 1 and entering the following command:

```
-RUNRUN.SYSTEM,S6,D1 [RETURN]
```

The "*S**n*" indicates the disk drive slot number (usually 6) and the "*D**n*" indicates the drive number (usually 1). Substitute the numbers that are appropriate for your setup for the "*n*" in "*S**n*" and "*D**n*". For a brief overview of the ProDOS operating system, see Appendix B.

Do you have a high-capacity disk?

If you have a hard disk or UniDisk 3.5 the command may be a little different than described above. If you have previously transferred the RunRun files, RUNRUN.SYSTEM and RUNRUN.APPLST (see Chapter 3: Installing RunRun), to a ProDOS subdirectory that is not the active directory, you must specify the complete pathname to invoke RunRun. For example, if RUNRUN.SYSTEM is stored in a subdirectory called PINPOINT that is contained in a disk directory called /HARD1, enter:

```
-/HARD1/PINPOINT/RUNRUN.SYSTEM [RETURN]
```

from Applesoft command mode to start up this program.

Do you have the Pinpoint RAM Enhancement Kit?

You should reconfigure the RAM Enhancement Kit according to the instructions in Chapter 3: Installing RunRun. This will place RunRun in RAM when you boot your computer (a warm or cold boot will do) and send you into RunRun. For more on the RAM Enhancement Kit, see Appendix C: Other Pinpoint Products.

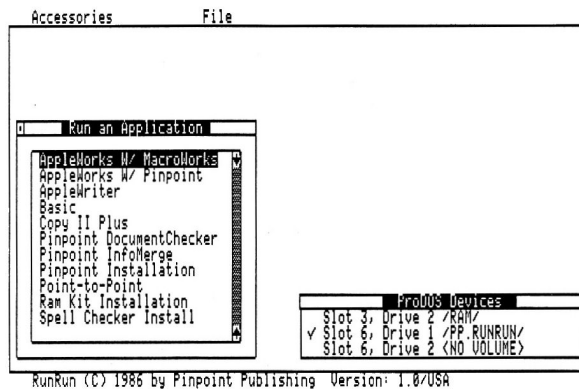
Now that RunRun has been brought up, you can begin to familiarize yourself with its simple but convenient features.

Checking RunRun Out

When you first bring up RunRun you will see the the following:

- A window on the lower left listing the applications. These are the programs you could access from RunRun.
- A window on the lower right listing the active device. (The default device will be the highest capacity drive.)
- A much larger window housing the other two windows. This is the RunRun desktop.
- A message line at the bottom of the screen. This area is used to display informational and error messages.

Figure 2.1
The RunRun Desktop



It is convenient to see the Application list first because normally you will want to go directly into your favorite program and begin working. The Application list window is one of many windows in the RunRun desktop. Read on to learn how to utilize the basics of RunRun.

Moving About the Application List Menu

Press the UP or DOWN ARROW keys to position to an application within the list. Press the RETURN key to invoke the application.

NOTE

The programs listed in the Application list menu are mainly examples of what you *could* load into RunRun. Most of them don't actually come with the program.

What's this at the top of my screen?

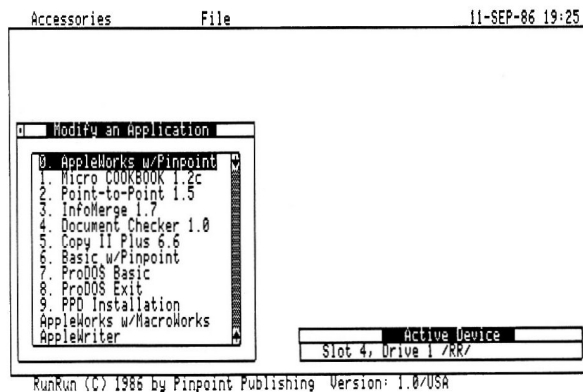
You may have noticed that at the top of the RunRun desktop there are the headings, "Accessories" and "File." These are the titles of the pull-down menus you can access. Press ESCAPE and you will pull down the Accessory window. These are the desktop accessories that let you make a quick calculation or maybe peek at your appointment calendar.

NOTE

The accessories do not come with RunRun. They are part of the Pinpoint Desktop Accessories, a separate program recommended for use with RunRun.

Press the RIGHT ARROW key and you will pull down the File menu. By using the ESCAPE key and RIGHT and LEFT ARROW keys, you can move between the menus of the RunRun desktop.

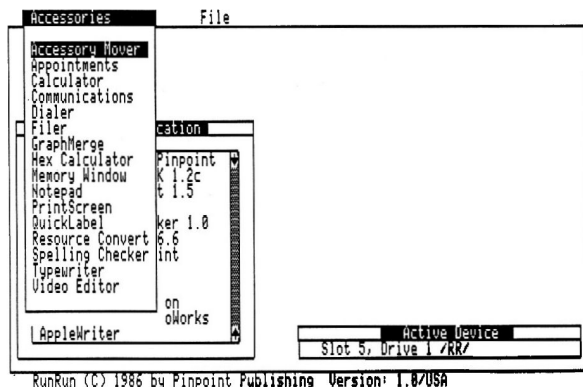
Figure 2.2
The Application List Menu
in Modify Mode



The Accessory
Pull-Down Menu

If the highlighted "Command Bar" is on the File menu, press the LEFT ARROW key. If the command bar is on the Applications list, press ESCAPE. Either of these should bring you back to the Accessory pull-down menu. To move within the Accessory menu just use the UP and DOWN ARROW keys — this will move the command bar.

Figure 2.3
The Accessory
Pull-Down Menu



NOTE

You should use the Pinpoint Desktop Accessories (Version 1.3 or greater) to install Pinpoint onto RunRun properly. Although Pinpoint has been installed for you, it has not been modified for your printer, modem or system. Also, if you have the Pinpoint Toolkit, you can use the "Accessory Mover" to move additional desktop accessories into RunRun. For more information on Pinpoint Desktop Accessories and Pinpoint Toolkit, see Appendix C.

Once you have moved the command bar to the accessory you wish to use and the accessories themselves are sitting in the appropriate drive, press RETURN. Or, you can press the character that corresponds to the first character of the accessory name (i.e. "G" for Graphmerge).

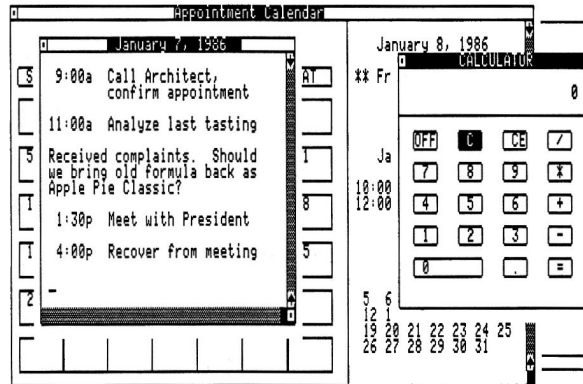
**Running Accessories
Within Accessories**
*Where did the name
RunRun come from?*

With the RunRun environment, you can run a desktop accessory directly from the RunRun desktop. This assumes, of course, that you have the Pinpoint Desktop Accessories. You can *also* invoke a desktop accessory while running another.

For instance, let's say that you invoke the Pinpoint Appointment Calendar from the RunRun desktop. You suddenly decide that you wish to compute a number with the Calculator. Press **⌘-P** to bring up the Pinpoint desktop accessory. You can "run" one accessory and then "run" another on top of it — RunRun.

Select the Calculator accessory and it will appear on the right side of the Calendar. Figure 2.4 below illustrates this point.

Figure 2.4
Calculator with the
Appointment Calendar



You can't always do it.

You cannot interrupt certain accessories. GraphMerge, for instance, cannot be interrupted because it is a graphic desktop accessory. (That means that since the graphic is double hi-res and the pop-up window is text, they don't mix very well on the screen.) The Appointment Calendar cannot be run within the Appointment Calendar, because ProDOS will not tolerate two separate applications maintaining the same open ProDOS file (Appointment Calendar's APPOINTMENTS.PP).

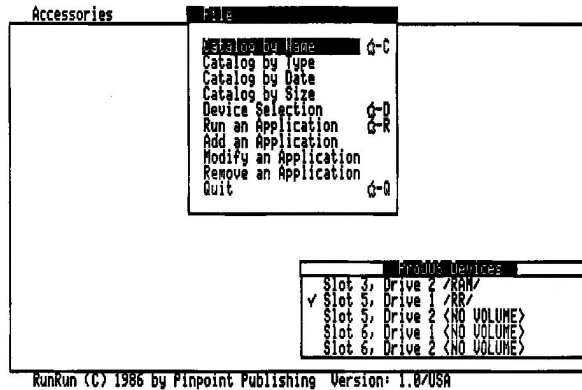
Use the appropriate exit routine to exit the accessory you are using and return to the Accessory pull-down menu.

The File Pull-Down Menu

Now, from the Accessory menu, press the RIGHT ARROW key to proceed to the File menu. The File pull-down menu allows you to obtain sorted catalogs of ProDOS volumes and directories, run ProDOS applications, add, modify, or remove ProDOS applications from the Application list window, and exit RunRun.

Press the UP or DOWN ARROW keys to position to a desired function. There are several "Quick Keys" defined. They appear on the right side of the File pull-down menu. Press **⌘-C** to invoke the catalog function. **⌘-D** allows you to select a new ProDOS device to focus on.

Figure 2.5
The File Pull-Down Menu



Cataloguing Your Files

One of RunRun's nicest features is its ability to catalog your files. As you can see, the first four selections on the File pull-down menu consist of different ways to catalog. The directory is taken from the active device. (Remember the window on the lower right hand corner of the screen?) You can sort files in the following ways:

- File Name — from A to Z
- File Type — from A to Z (i.e. ADP, AWP, SYS)
- Modification Date — latest to earliest
- File Size — smallest to largest

Try it out!

If the command bar is not on "Catalog by Name," use your up or down ARROW keys to position it and hit RETURN. (Remember, you can also press C-C and get the same result.) You should get an alphabetized listing of the files in the main directory of the active device (listed in the lower right hand corner of your screen). If your computer beeps at you, see the section called "It Won't Work" on page 2.7. If you get a directory with no files in it, see "Selecting the Active Device" on the same page.

Moving Around

Press the UP or DOWN ARROW keys to move the cursor from one file to another. If not all the file names can fit within the catalog window, you can scroll the window with the ARROW keys. If you wish to scroll the window quickly, and an extensive list of files exists, you can use the C-UP ARROW and C-DOWN ARROW keys to move one screen at a time.

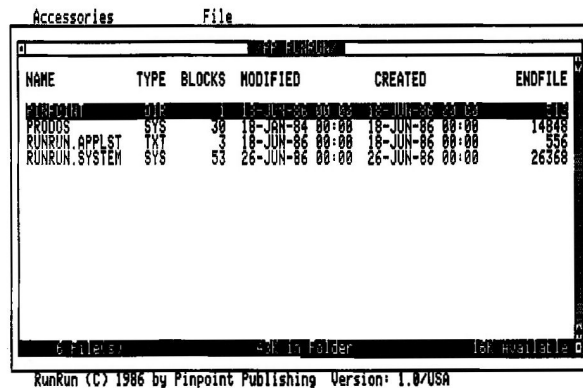
Another Way to Run a Program

Press the RETURN key while pointing to a system file (file type SYS) to run that application immediately. This is an alternate method of running a ProDOS application. The other method, if you recall, was to choose a program from the Application list menu.

Catalog within a Catalog

Once you are in a directory and you would like to see a catalog of a subdirectory, just highlight the name of the subdirectory (file type DIR) and select it using the RETURN key. This will cause the new directory catalog to be displayed. If you would like to exit the subdirectory you can return to your original directory by pressing the ⌘-ESCAPE key sequence. This allows you to cascade back “up” a directory.

Figure 2.6
A Catalog Window



The screenshot shows a window titled "RunRun" with a menu bar containing "Accessories" and "File". Below the menu bar is a table with the following columns: NAME, TYPE, BLOCKS, MODIFIED, CREATED, and ENDFILE. The table contains the following data:

NAME	TYPE	BLOCKS	MODIFIED	CREATED	ENDFILE
PRODOS	DIR	1	18-JUN-86 00:00	18-JUN-86 00:00	14848
RUNRUN.APPLST	SYS	30	18-JUN-86 00:00	18-JUN-86 00:00	526
RUNRUN.SYSTEM	SYS	53	26-JUN-86 00:00	26-JUN-86 00:00	26368

At the bottom of the window, there is a status bar that reads: "6 Files", "1 in folder", "1st Avail", and "RunRun (C) 1986 by Pinpoint Publishing Version: 1.0/USA".

Did you know you could change the size and location of the catalog window?

You can size the catalog window to fit your particular needs. If you want to see everything there is to know about your files, you can enlarge your window. Or if you don't care about the “creation date” or the “end of file” you can shrink the window.

Making Your Window Grow (or Shrink)

Press the GROW [⌘-G] key to enter the grow mode. To *grow* your window, use the RIGHT ARROW key to drag the right margin out toward the right hand side of the screen. Then use the DOWN ARROW key to drag the lower border toward the bottom of the screen. To *shrink* the window, use the LEFT and UP ARROW keys. When your window is the size you like, press RETURN.

Dragging Your Window Around

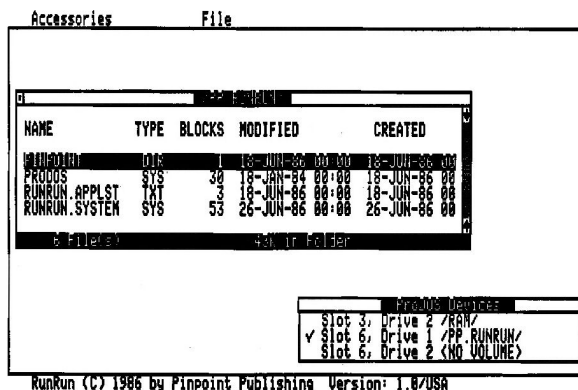
Not only can you change the size of your window but you can also drag it to any spot on your screen. Simply press the DRAG [⌘-D] key to enter the drag mode. Press the cursor arrow keys to position the window. Press the RETURN key to lock it in place.

HINT

If you want to grow your catalog window as big as the screen or close to it, first drag it to the upper left hand corner of the screen.

RunRun will remember the size and position of your windows until you decide to change them again.

Figure 2.7
Catalog Window Sized
and Relocated



Selecting the Active Device The catalogs you view are determined by the device that is listed. From the File pull-down menu, you can change the active ProDOS device by selecting the “Device Selection” option. The installed ProDOS devices will be read and a list of devices with their current volume name will be displayed. Position to the desired device using the UP or DOWN ARROW keys and select it using the RETURN key.

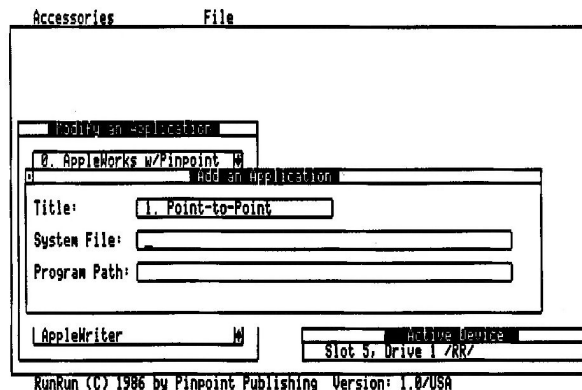
It won't work! Selecting a device with a “<NO VOLUME>” name will prevent you from obtaining a catalog of this device because it does not contain a valid ProDOS volume name. By the same token, if you list a device that has a volume name but no files, you won't be able to grow or drag it. If you try the grow or drag keys you will simply return to the File pull-down menu.

So how do I add applications? The main function of RunRun is to allow you to select your programs and run them with ease. The lower half of the File pull-down menu lets you manipulate the application programs that you want to use. RunRun comes with a sample listing of programs that a typical user would have. They're just examples and cannot be run. But by looking at how they are set up you can get a good idea of how to set up your own programs.

Adding an Application You can customize your RunRun desktop to include a list of frequently run ProDOS applications, such as AppleWorks,TM Pinpoint, InfoMerge,TM Point-to-Point,TM Document Checker,TM MouseWrite,TM AppleWriter,TM etc. Adding ProDOS applications to the Application list is simple.

Select “Add an Application” from the File pull-down menu. You can position to this option quickly by pressing “A” for “Add.” Press RETURN to select this option. The “Add an Application” entry box will appear containing three fields to be filled in, the *title*, *system file name*, and the *program path* (to be filled in only if there is one).

Figure 2.8
The Add an Application
Menu



The Title Field

The flashing cursor will appear in the *title* field. The title is a descriptive name assigned by you. For instance, if you wished to add AppleWorks to the Application list, enter "AppleWorks" as the title. Press RETURN or the UP or DOWN ARROW keys to move to another field.

The System File Field

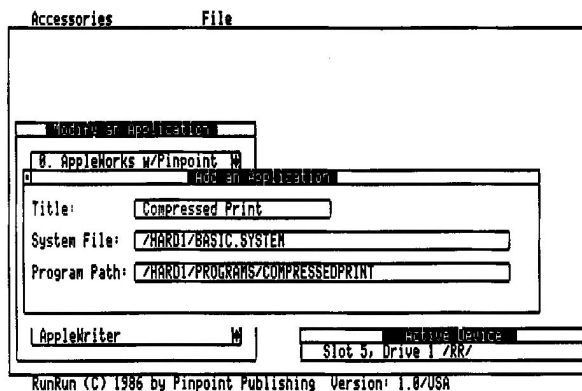
The *system file* is the name of the ProDOS "SYS" file that is used to start up the application. This should also contain the volume name of the system file. For instance, if your AppleWorks was stored on a hard disk volume "/HARD1" under a directory "APPLEWORKS", your system file should be:

/HARD1/APPLEWORKS/APLWORKS.SYSTEM

The Program Path Field

The program path is an optional field, and is typically used with interpreters such as "BASIC.SYSTEM." It can serve a variety of purposes. Remember, this is an *optional* field and you probably won't use it unless you work with BASIC programs.

Figure 2.9
The Program Path
with a BASIC Program



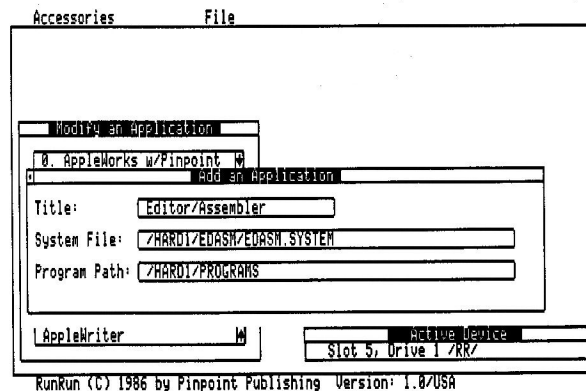
Things to Do with the Program Path Field

First, you can specify a particular program that should be run. Let's say for instance, you want to run a BASIC program called "COMPRESSEDPRINT." If it resides on your hard disk, volume "/HARD1" under directory "PROGRAMS", your screen might look like the screen shown in Figure 2.9.

Normally, if your system file is BASIC.SYSTEM, the file "STARTUP" from BASIC would be run. Since you have placed a different BASIC program under the program path, it will run "COMPRESSEDPRINT" instead. The default path will be set to the path containing the program path.

Second, you can use this "program path field" to specify a *default path*, rather than a startup program. This means that the application you run will access the drive you specify here instead of the system path. An example of this would be if you have your Editor/Assembler on your hard disk, volume name /HARD1/, and in the directory /EDASM/ but you want the editor to access all your files out of the /PROGRAMS/ directory, also on you hard disk. You would set up your menu like this:

Figure 2.10
The Program Path
with a Default Path



Exiting a BASIC Program

Within a BASIC program, issuing the "BYE" command will return you to RunRun.

A Special Note to RAM Kit Owners

If you Add, Modify, or Remove applications from the Application list, the file "RUNRUN.APPLST" is modified. If you have copied this file to the RAM drive for faster operation, it should be copied back to a permanent mass-storage device (your floppy, UniDisk 3.5 or hard disk) before you turn off your machine. If you have "Sized" or "Moved" your catalog window, the file "RUNRUN.SYSTEM" will be modified, and must be saved to disk as well. You probably know what it feels like to lose your work so be sure to *save* these files.

Running an Application

Choose the "Run an Application" option from the File pull-down menu and a list of applications will appear in the lower left corner of the desktop. You can position to the application by using the UP or DOWN ARROW keys or by pressing a character, i.e. "C" for "Copy II Plus." Press RETURN to invoke this application.

If the application uses the traditional ProDOS exit procedure, RunRun will regain control after you have quit your application. Most programs do use the standard exit routine but ProDOS EDASM and ASCII Pro™ are examples of programs that don't. If you run into this problem you should contact the manufacturer of the errant program for more information.

Modifying an Application

Select "Modify an Application" from the File pull-down menu to select an application definition that can be modified. You can change the title, system file name, or the program pathname.

HINT

Press RETURN to invoke "Modify an Application" and take a look at one of the sample programs we have provided. This should give you an idea of a typical configuration.

Removing an Application

Select "Remove an Application" to remove unwanted ProDOS application entries from the Application list. Simply position to the undesired application and press RETURN. RunRun will ask if you're positive you want to remove the selected application. If you wish, it will be removed from the list.

Quitting RunRun

Select the "Quit" option from File menu to leave RunRun. Press CONTROL-⌘-RESET to warm boot your Apple with another startup disk. The only way to re-enter RunRun, once you quit, is to re-boot the program.

Chapter 3

Installing RunRun

Installing Pinpoint onto RunRun

Since RunRun was constructed to work with Pinpoint Version 1.3 or greater, the first thing to do is properly install Pinpoint onto RunRun. You may have noticed the title "Pinpoint Installation" on the Application list of the RunRun desktop. This gives you two methods of installing Pinpoint.

The First Method

- Boot up RunRun.
- Go into the File pull-down menu.
- Select "Modify an Application" and press RETURN.
- Select "Pinpoint Installation" from the Application list.
- Change the System File field to include volume name of the file INSTALL.SYSTEM. (The volume name is dependent upon where you have installed this file. If you never installed it anywhere, it will still be on the /PP.INSTALL side of your original Pinpoint disk.)
- Once this has been changed, select "Pinpoint Installation" from the Application list and install Pinpoint onto RunRun. (If you need any help here, refer to the *Pinpoint Desktop Accessories User Guide*.)

The Second Method

- Just boot up Pinpoint.
- Go through the installation procedure and install Pinpoint onto RunRun.

NOTE

This second method may seem better because it's shorter but the first method helps you to familiarize yourself with the operation of RunRun.

Installing RunRun onto Your Storage Device

Just select "RunRun Installation" from the Application list and the installation menu will appear on your screen. RunRun will do a quick check and list all of your active devices under the heading "ProDOS Device Table." As indicated by the directions on the screen, you just position the command bar to the location where you wish to have RunRun (the files RUNRUN.SYSTEM and RUNRUN.APPLST) copied to and press RETURN. The file RUNRUN.SYSTEM will be placed as the first system file on the device, providing the file "CLOCK.SYSTEM" does not appear on the disk first. (If this is the case, it will simply go second.)

**Reconfiguring the
RAM Enhancement Kit**
(If you have it)

If you are using the Pinpoint RAM Enhancement Kit follow these steps.

- The two files RUNRUN.SYSTEM and RUNRUN.APPLST should be listed in the “ProDOS file Autocopy Selection.”
- The “Startup Prefix” will be the volume name of the device containing the file RUNRUN.SYSTEM.
- The “Startup Path” will be RUNRUN.SYSTEM.

NOTE

If you own an Applied Engineering™ RAM card and your Appleworks has been modified by the S.A.D.E™ (Super Appleworks Desktop Expander) you will need to partition Appleworks — even if you have our RAM Enhancement Kit. When you boot up RunRun, select “Partition Appleworks” from the Application list menu and a list of memory amounts will appear on your screen. Select the amount you need for RunRun, the desktop accessories, and any other ProDOS applications you will be loading into your RAM drive. You can choose the same amount of memory here as you did in the RAM Enhancement Kit. Don’t worry, if you allocate too much or too little memory — you can always do it again.

That’s it!

Once RunRun is in place you are ready to go. Just boot up according to your configuration and you’ll land in the RunRun desktop. You’ll find this program is fun to use and essential to a well managed system.

Appendix A

The Bare Bones Step-by-Step Chart

- 1. Make Copies**

Make copies of RunRun and Pinpoint and the RAM Enhancement Kit (If you have these programs).
- 2. Install Pinpoint**

Install Pinpoint Version. 1.3 onto RunRun.
- 3. Install RunRun**
 - Boot up RunRun and select "RunRun Installation" from the menu that appears on the screen.
 - Place it on the device of your choice (Presumably on the disk you start up from).
 - The two files RUNRUN.SYSTEM and RUNRUN.APPLST will be copied to that device and RUNRUN.SYSTEM will be the first file listed (Second, if you have CLOCK.SYSTEM on there too).
- 4. Reconfigure RAM Enhancement Kit**
(if you have it)

Reconfigure the RAM Enhancement Kit to include the two new RunRun files.
- 5. Boot-up RunRun**

Bring up RunRun from its new location and use the ESCAPE key and RIGHT and LEFT ARROW keys to move between the pull down menus and the Application list (Be sure to run "Partition" from the Application list menu if you have an Applied Engineering RAM card).
- 6. Run Your Programs**

Highlight the desired application and press RETURN to run your programs.
- 7. Use the Accessories**
 - Press ESCAPE to get the Accessory menu, press RETURN to invoke an accessory.
 - Once you are in an Accessory, press SOLID-APPLE-P to bring up the Accessory menu again. From here you can run another accessory.
- 8. Catalog Your Files**

The headings on the File pull down menu will allow you to catalog your files and add, change or delete your applications.
- 9. Go for it!**

Appendix B

ProDOS Pathnames Made Simple

Overview

This refresher on ProDOS Pathnames is divided into four general sections:

1. *What's a ProDOS Pathname?*
2. *What's in a ProDOS Pathname?*
3. *ProDOS Pathname Spelling*
4. *ProDOS Pathname Syntax*

What's a ProDOS Pathname will very briefly tell you why you have to bother with ProDOS Pathnames. *What's in a ProDOS Pathname* will tell you what components come together to make a ProDOS Pathname. *ProDOS Pathname Spelling* will show you the rules for creating the individual components of a ProDOS Pathname, and *ProDOS Pathname Syntax* will teach you how to link the individual components of a ProDOS Pathname into a complete ProDOS Pathname.

What's a ProDOS Pathname?

It may be better to start with the question: What's ProDOS? ProDOS is a collection of programs that, among other things, controls such Apple disk drive functions as loading, saving, copying, and erasing your work files. A ProDOS pathname is ProDOS's map to the specific work file you want ProDOS to load, save, copy, or erase. Just like you tell a plumber in which house to work, in which room of the house to work, and finally on which fixture in the room to work; you have to tell ProDOS in which storage device to work, in which section of the storage device to work, and on which work file in the specified location to work.

What's in a ProDOS Pathname?

When you access your work you must:

1. Tell your computer where you want it to access your work
2. Tell your computer the name of the work you want it to access

You might say, then, that there are two general types of names that you must know how to give your computer when you access your computer work. There are:

1. PLACE names that tell your computer where your work is
2. And there are THING names that tell your computer what the work is.

Place Names

There are two kinds of place names. There are:

1. VOLUME names
2. And DIRECTORY names

A **VOLUME** name is the most general kind of name. It identifies the floppy, hard, high capacity, or RAM disk on which your work resides. Another word for a **VOLUME** name is the **ROOT DIRECTORY** name. Supplying ProDOS a **VOLUME** name is analogous to telling the plumber in the example above in which house to work.

A **DIRECTORY** name is a more specific name than a **VOLUME** name. A **DIRECTORY** name identifies the section of the floppy, hard, high capacity, or RAM disk in which your work resides. Supplying ProDOS a **DIRECTORY** name is analogous to telling the plumber in the example above in which room of the house to work. If you have not divided your storage device into sections, then the ProDOS pathname for any file on that storage device will not include a **DIRECTORY** name. There can, however, be up to 51 different subdirectories or files in the **ROOT DIRECTORY**, and therefore, 51 **DIRECTORY** names through which you can route your computer to a work file.

Thing Names

There is only one kind of thing name. It is called a **FILE** name.

A **FILE** name identifies your computer work. It is the most specific of the kinds of names that make up a ProDOS pathname. A **FILE** name represents the light at the end of the tunnel, the pot of gold at the end of the rainbow. At the end of its journey down the path you specify by supplying **PLACE** names, ProDOS should find this **FILE** name and the computer work associated with it. Supplying ProDOS with a **FILE** name is analogous to telling the plumber in the example above on which fixture to work.

ProDOS Pathname Spelling Now that you know that ProDOS pathnames are made up of **PLACE** names and **THING** names, you should learn the rules for creating **PLACE** and **THING** names. There's not that much to it; the rules for creating **PLACE** and **THING** names are the same. After you learn these simple rules, the last section will teach you how to link these different names you create together to create an entire ProDOS pathname. For now, let's learn the rules naming your work and the places where you store your work:

1. The name can be up to 15 characters long. There can be no blank spaces. It is common practice to substitute blank spaces with periods

LE.PETIT.PRINCE

2. The name must begin with a letter from the alphabet

ON.CLOUD.9

3. Characters two through fifteen of the filename may contain any combination of letters, numbers, and periods.

TWO.4.6.8.

ProDOS Pathname Syntax

If you knew where a treasure was hidden, and you had to tell someone how to get to it, you wouldn't tell them:

1. Dig
2. Take ten steps north from the big tree in the center of the village
3. Go to Spain

4. Find an iron box about six feet under
5. Go to the village of Corona Del Mar

You would start with the most general instructions and finish with the most specific, like this:

1. Go to Spain
2. Go to the village of Corona Del Mar
3. Take ten steps north from the big tree in the center of the village
4. Dig
5. Find an iron box about six feet under

Well, that's how you order your ProDOS Pathname components: start with the most general, and end with the most specific. You:

1. Start with PLACE names, listing the VOLUME name first, which is the most general PLACE name
2. Then list DIRECTORY name(s), the more specific of the PLACE names
3. Finish with the THING name, known as the FILE name, which is the most specific of all the names

Connecting the Parts

How do you actually connect these names together so ProDOS will recognize the names as a complete ProDOS pathname?

Well, if you were to write out the treasure example into a complete English sentence, you would connect the components with commas, like this:

Go to Spain, go to the village of Corona Del Mar, take ten steps north from the big tree in the center of the village, dig, and find an iron box about six feet under

But in ProDOS language, you connect the components with slashes, like this:

`/VOLUME.NAME/DIRECTORY.NAME/FILE.NAME`

Notice that you start the whole deal with a slash as well as connect the separate components with slashes. You do this so ProDOS will recognize what follows the initial slash as instructions to your work file. Adapting our treasure hunt example for ProDOS, we might get the following result:

`/SPAIN/CORONA.DEL.MAR/TEN.STEPS.NORTH/BLACK.IRON.BOX`

In the example above, `/SPAIN/` is the VOLUME name, `/CORONA.DEL.MAR/` and `/TEN.STEPS.NORTH/` are DIRECTORY names, and `/BLACK.IRON.BOX` is the FILE name.

**When Your Computer Asks
for the PREFIX or PATH,
Not the PATHNAME**

Sometimes your computer or a computer program will only ask you for the PATH to your work file, and not for the complete PATHNAME. When a computer or computer program asks you for the PATH, it is saying "I know what you want, I just don't know where to look for it." All you do to supply your computer with the PATH to a certain work file is subtract the FILE name like this:

`/VOLUME.NAME/DIRECTORY.NAME/`

So our treasure hunt example would look like this:

`/SPAIN/CORONA.DEL.MAR/TEN.STEPS.NORTH/`

A ProDOS PATH is the same as a ProDOS PREFIX.

**When Your Computer Only
Asks for the FILE Name**

When your computer or computer program asks for the FILE name, it is saying, "I know where to look, but I need to know what to look for." All you do to supply the FILE name is subtract the PATH or PREFIX, which is the same thing as subtracting the VOLUME name and the DIRECTORY name(s). This is what it looks like:

`/FILE.NAME`

And this is how the treasure hunt example looks:

`/BLACK.IRON.BOX`

Appendix: C

Other Pinpoint Products

Pinpoint™ Desktop Accessories \$89.00

A line of desktop accessories that “pop-up” within AppleWorks, Point-to-Point, InfoMerge, and other ProDOS applications.

- **Appointment Calendar** — Print schedules to take with you. MonthView, DayView and Summary displays.
- **Calculator** — Four math functions: +, -, *, /. 16 digit display with scientific notation.
- **Communications** — Instant modem communications from AppleWorks desktop with simplified auto logon macros; no complicated control codes required. Downloads (records) files in AppleWorks’ AWP file format.
- **Telephone Dialer** — Finds phone numbers anywhere on *any* screen. No phone directory or databases to re-enter.
- **GraphMerge** — Paste up to 16 single or double hi-res graphic images, mix & match, anywhere in AppleWorks documents.
- **Notepad** — Powerful baby word processor produces AppleWorks files. Use Notepad files inside AppleWorks documents, or with GraphMerge.
- **QuickLabel** — Envelope addresser/labeler, with cut-and-print utility. Position address block on an electronic envelope, then print on a real envelope, label or paper.
- **Typewriter** — Ideal for short letters, forms, file folder labels, and name badges. Compose, edit, then print, just like an IBM Memory Writer™ typewriter.

Pinpoint Spelling Checker™ \$69.00

This additional Pinpoint desktop accessory enables you to spell check AppleWorks word processing documents, spreadsheets and database files *without ever leaving AppleWorks*.

- Spell checks words, paragraphs or entire documents of any size in memory.
- Suggests alternative words.
- Corrects and reformats automatically.
- Requires Pinpoint Desktop Software.

Point-to-Point™ \$129.00

The #1 communications software program for the Apple II!

- AppleWorks style integrated communications with all the right tools for most any job.
- Exclusive Extended Xmodem Protocol (EXP) with CRC-16 transmits/receives multiple files in batches with original file names, extensions, and file attributes intact. Ready to run, without misspelled file names or tiresome file conversions.
- 14 powerful macros commands automate logon sequences; system operating commands automatically upload and download electronic mail or program files. Pattern recognition feature even makes decisions based on what it “sees” coming across the screen.
- Built-in text editor, or send AWP or text files directly.
- Simultaneous formatted printing while online. Instant “PrintScreen” prints anything and everything displayed on your screen.
- Impressive file handling utilities manage files, subdirectories and paths without typing, even while online!
- Install Pinpoint Desktop Accessories for ever greater versatility, or use RunRun and Toolkit to add valuable desktop accessories anytime.
- Smart utilities strip line feeds from downloaded files, and convert TXT to AWP files; plus 8 indispensable file type conversions save double work!
- Support for dozens of modems, including the newest 2400-baud units, gets your new system working right the first time. Interface cards include old standbys, plus the emerging Apple II interface technologies of tomorrow.
- Written by Gary B. Little, an expert Apple II and Macintosh programmer, and author of countless articles for *A+*, *Call APPLE*, *Nibble* and five recent Apple books.

ProFILER™ CALL

A single disk database manager and report generator. With this *one* program you can easily design, organize, file, search, sort, calculate, merge, and print using floppy or hard disk.

- Get up to 1,500 records per floppy or 65,000 on a hard disk; 250 fields per record!
- Multiple files per disk, multiple index files, full screen editor.
- Pinpoint and AppleWorks compatible.
- Optional data conversion program for PFS users (DOS 3.3 and ProDOS versions).

Pinpoint Apple IIe Upgrade Kit \$29.00

- Permits Pinpoint and many 'new' Apple IIe software programs to run on plain Apple IIe with 128K
- Solves many of the compatibility problems older software programs have with the Enhanced Apple IIe
- Includes Mouse Text Video ROM, exact copy of Apple's Character Generator ROM #342-0265 approved by Apple.
- Includes GTE or Rockwell 65C02 microprocessor.
- Does NOT include Apple's proprietary 'CD' and 'EF' ROMs required for most mouse-based software. This Kit does not "Enhance" the Apple IIe. This Kit is only to be used on Apple IIe's.
- This upgrade is performed at user's own risk.
- Handy chip puller included

Pinpoint RAM Enhancement Kit \$29.00

- Configures partitioned RAM disks.
- Automatically uploads non copy protected ProDOS applications and files to partitioned RAM disks.
- Menu driven setup. Catalog with toggles displays programs/files to be uploaded.
- Includes a ProDOS RAM switcher for AppleWorks with Pinpoint and other ProDOS applications uploaded into RAM, such as Business Works accounting software, Point-to-Point communications software, or InfoMerge mail merge and print formatting program.
- Requires Pinpoint Desktop Software.

Pinpoint Modem Enhancement Kit \$ 29.00

- Advanced modem software enhancement for Pinpoint's Communications window.
- Logon macros with default communications setups.
- Keyboard and video character remapping, simple file encryption program.
- Selective character filtering.
- Required for Novation, Microcom and other non-standard external/internal modems or interface cards.

InfoMerge™ \$79.00

On-screen, direct-print, mail-merge and print formatting program that works with AppleWorks. Automatically select names from AppleWorks database, or manually scan files forward/backward, add multiple keyboard inputs (great for invoices or forms), perform dynamic field calculations, preview on screen before printing, or just print everything. One copy each or one hundred or mix & match. Presto!

Optionally, print to disk files for use by other programs, such as telecommunications software like Point-to-Point or Pinpoint Communications Window. Pop-up any Pinpoint Desktop Accessory for added functionality.

Micro Cookbook \$49.95

- Big 8th Edition. Over 100,000 copies sold.
- Ask the computer what's for dinner. Enter ingredient, nationality, course or whatever, and Micro Cookbook offers up a menu with delicious possibilities.
- Choose from Micro Cookbook's 150 tested recipes (supplied on the program disk) or add your own.
- Selects recipes from any individual recipe disk or path, or automatically searches up to 8 others — over 4,000 recipes online for instant recall.
- Automatically adjusts recipes for different serving sizes.
- Automatic shopping list preparation.
- Valuable on-line reference: nutrition facts, food selection and storage, and ingredient substitution suggestions.
- Lightning fast operation with unparalleled ease of use.
- Fourth-generation, bit-mapped database design finds plurals, truncations, multi-variant relations (7 simultaneous index keys), over-looks request errors, and generally works hard so you don't have to.
- Versions available for Apple II+ (64K DOS 3.3), Apple IIc/IIe (128K DOS 3.3), Apple IIc/Enhanced Apple IIe with 128K (ProDOS), Commodore 63/128,[™] and IBM PC,[™] XT[™] and jr.[™]

Optional Recipe Disks \$19.95

- How smart cooks eat better and waste less.
- Optional recipe disks, over 3,000 exciting recipes, add variety to your menu.
- Crowd-pleasing favorites include:

Appetizers
Soups & Salads
Meatless Meals
Kids Cookery
Breads & Spreads
Daily Bread & Beyond
Microwave Cooking

Holiday Meals
Food Processor Cooking
Wok Cooking
California Beef
Special Diets (Includes food allergies)
Daily Bread & Beyond, Food Processor
Desserts

...and more on the way!

New for Fall 1986

Pinpoint Toolkit™ \$69.00

Programmers resource and toolbox for writing Desktop Accessories all your own. Includes several handy desktop accessories for just about anyone, not just for programmers:

- Accessory mover for adding new accessories anytime.
- Pop-up version of ProDOS Filer.
- Screen printing facilities, text or graphics depending on printer type.
- Enhanced printing for Desktop Appointment Calendars.
- Decimal, Hexadecimal, or Binary Calculator with print tape.

Outstanding tools for any serious ProDOS programmer include:

- Comprehensive Pinpoint Internal Architecture Documentation.
- Video Resource Editor for accessory development and prototyping.
- Pinpoint's newest interactive desktop environment, RunRun, for expanded limited multi-tasking capabilities.
- Commented source code to several Pinpoint Desktop Accessories provided as programming examples.
- Programmer utilities require 256K or greater Enhanced Apple IIe or Apple IIc, ProDOS Assembly language experience, or use of MICOL BASIC, or KYAN PASCAL.

New For Fall *(continued)*

Pinpoint Instant Business Letters \$49.00

Business letter templates as AppleWorks word processor documents.

- Ready to use and professionally designed to meet your everyday business needs.
- Perfect for mail merging with Pinpoint's InfoMerge.

Pinpoint Document Checker \$69.00

(with Spelling Checker only \$99.00)

The fast, efficient stand alone spelling checker for larger AppleWorks documents. Up to 30 words per second!

- Uses the same dictionaries as the Pinpoint Spelling Checker Accessory.
- Selectable auxiliary dictionaries for customized professional needs.
- Lists word occurrences. Remembers and automatically uses any correction.

Call for information about Key Player and the Graphic Edge.

Contact Pinpoint for complete product information and scheduled release dates.

Index

- [⌘-P] 2.4
- [⌘-C] 2.4, 2.5
- [⌘-D] 2.4, 2.6
- [⌘-DOWN ARROW] 2.5
- [⌘-ESCAPE] 2.6
- [⌘-G] 2.6
- [⌘-UP ARROW] 2.5
- [CONTROL-⌘-RESET] 2.1, 2.10
- A**
 - Accessory Mover 2.3
 - Accessory menu 2.2-2.4
 - Active device 2.2
 - Adding an application 2.4, 2.7, 2.9
 - ADP 2.5
 - APLWORKS.SYSTEM 2.8
 - Applesoft 2.1
 - AppleWorks 2.7, 2.8
 - AppleWriter 2.7
 - Application list menu 2.2
 - Applications
 - add 2.4, 2.7, 2.9
 - modify 2.4, 2.9, 2.10
 - remove 2.4, 2.9, 2.10
 - run 2.4, 2.7, 2.9
 - Applications list menu 2.5, 2.7, 3.1
 - Appointment Calendar 2.4
 - APPOINTMENTS.PP 2.4
 - ASCII Pro 2.10
 - AWP 2.5
- B**
 - BASIC.SYSTEM 2.8, 2.9
 - Boot-up RunRun 2.1
 - BYE 2.9
- C**
 - Calculator 2.4
 - Catalog of a subdirectory 2.6
 - Catalog 2.4, 2.7
 - Catalog window
 - grow 2.6
 - move 2.6, 2.9
 - shrink 2.6
 - size 2.6, 2.9
 - CLOCK.SYSTEM 3.1
 - Cold boot 2.1
 - Command bar 2.3
 - COMPRESSEDPRINT 2.9
 - [CONTROL-⌘-RESET] 2.1, 2.10
 - Copy-protected 2.1
 - Copy II Plus 2.1, 2.9
- D**
 - Default path 2.9

- D**
 - Default path 2.9
 - Device selection 2.4, 2.7
 - Device table 3.1
 - Dialog box 1.1
 - DIR 2.6
 - Document Checker 2.7
 - Double hi-res 2.4
 - DRAG [⌘-D] 2.6
 - Drive number 2.1
 - Drive slot number 2.1
- E**
 - EDASM 2.9, 2.10
 - Exit BASIC 2.9
 - Exit RunRun 2.4, 2.10
- F**
 - File
 - modification date 1.1, 2.5
 - name 1.1, 2.5
 - menu 2.2-2.4, 2.7, 2.10
 - size 1.1, 2.5
 - type 1.1, 2.5
- G**
 - GraphMerge 2.3
 - GROW [⌘-G] 2.6
- H**
 - Hard disk 1.1, 2.1, 2.9
 - High capacity disk 2.1
- I**
 - InfoMerge 2.7
 - INSTALL.SYSTEM 3.1
 - Installing Pinpoint 3.1
 - Installing RunRun 3.1
- M**
 - Make copies 2.1
 - Message line 2.2
 - Modification date 1.1, 2.5
 - Modifying an application 2.4, 2.5
 - MouseWrite 2.7
- N**
 - <NO VOLUME> 2.7
- P**
 - Partition AppleWorks 3.2
 - Pinpoint 2.7
 - Desktop Accessories 1.1, 2.2-2.4
 - Installation 2.3, 3.1
 - RAM Enhancement Kit 1.1, 2.1, 3.2
 - Toolkit 1.1, 2.3
 - Point-to-Point 2.7
 - ProDOS 2.4
 - BASIC 2.1, 2.8, 2.9
 - catalog 1.1, 2.3, 2.4
 - device 2.4
 - directory 2.5, 2.6
 - Filer 2.1
 - operating system 2.1
 - pathname 2.1

- subdirectory 2.1, 2.6
- System Utilities 2.1
- volume name 2.7
- Program path field 2.7, 2.8, 2.10
- Program selector 1.1
- Pull-down menu 1.1, 2.2

Q Quick keys 2.4
Quit 2.10

R RAM drive 1.1, 2.1, 3.2
RAM Enhancement Kit 1.1, 2.1, 3.2
Removing an application 2.4, 2.9
Running an application 2.4, 2.5
RunRun Desktop 1.1, 2.2
RUNRUN.APPLST 2.1, 2.9, 3.1, 3.2
RUNRUN.SYSTEM 2.1, 2.9, 3.1, 3.2
RunRun installation 3.1

S Select a ProDOS device 2.4, 2.7
Shrink the window 2.6
Simulation tank 1.1
STARTUP 2.9
Startup

- path 3.1
- prefix 3.1

Super AppleWorks Desktop Expander 3.2
SYS 2.5, 2.8
System file 2.5, 2.8
System file name field 2.7, 2.8, 2.10

T Title field 2.7, 2.8, 2.10

U UniDisk 3.5 1.1, 2.1, 2.9

W Warm boot 2.1, 2.10
Write-protected 2.1

*Pinpoint Publishing
5901 Christie Ave.
Emeryville, CA 94608
(415) 654-3050
Telex 245-8579 MCI
CompuServe 76244.123*

*P.O. Box 13323
Oakland, CA
94661-0323*

